

# Humidifier Instructions

## Le Veil iCigar DCH-56

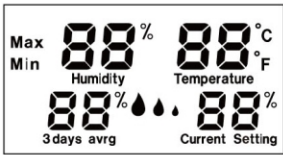

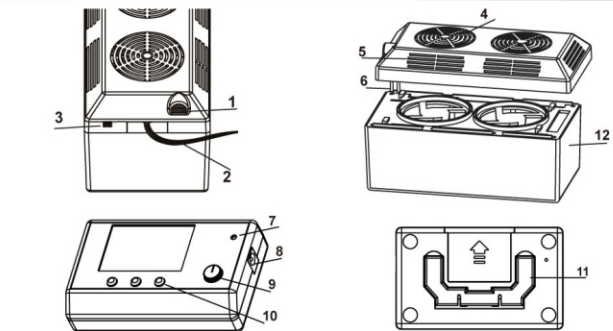
We Care About Quality in Cigars

Thank you for purchasing this Le Veil product. This digital cigar humidifier features indoor temperature, humidity (expressed as relative humidity or RH), temperature and 3 days average, high/low and more. Please read this manual in its entirety to fully enjoy the benefits and features of this product. Please keep this manual for future reference.

Note: A clear film is applied to the top face that can be removed prior to using this product. Locate the clear tab and simply peel to remove

### Humidifier Features

- Compact Dual Fan and See-through 1/ Gal Water Tank Design
- Maintains Up to 55 CB-FT Humidors
- Dual Recalibrating Technology for Accuracy
- LCD (Liquid Crystal Display) with Light
- Low Water Alarm
- Optional Support Unit (NOT INCLUDED: DCH-55CS) for Larger Humidors.

	<p>Humidity Temperature °C , °F 3 Days Avrg Max, Min</p> 	<p>Current humidity in humidor Current temperature in humidor Celsius or Fahrenheit temperature 3 day average humidity in humidor 3 day maximum or minimum humidity Showing water level in humidifier</p>	
			
<table border="0"> <tr> <td style="vertical-align: top;"> <ol style="list-style-type: none"> <li>1. Humidity sensor</li> <li>2. Flat power cable</li> <li>3. Power terminal for support water tank</li> <li>4. Air in ventilation</li> <li>5. Air out ventilation</li> <li>6. Water sensor</li> <li>7. Power light</li> <li>8. 12V power terminal</li> <li>9. Digital RH adjuster</li> <li>10. Control buttons</li> <li>11. Reset memory button</li> <li>12. Support Leg</li> </ol> </td> </tr> </table>			<ol style="list-style-type: none"> <li>1. Humidity sensor</li> <li>2. Flat power cable</li> <li>3. Power terminal for support water tank</li> <li>4. Air in ventilation</li> <li>5. Air out ventilation</li> <li>6. Water sensor</li> <li>7. Power light</li> <li>8. 12V power terminal</li> <li>9. Digital RH adjuster</li> <li>10. Control buttons</li> <li>11. Reset memory button</li> <li>12. Support Leg</li> </ol>
<ol style="list-style-type: none"> <li>1. Humidity sensor</li> <li>2. Flat power cable</li> <li>3. Power terminal for support water tank</li> <li>4. Air in ventilation</li> <li>5. Air out ventilation</li> <li>6. Water sensor</li> <li>7. Power light</li> <li>8. 12V power terminal</li> <li>9. Digital RH adjuster</li> <li>10. Control buttons</li> <li>11. Reset memory button</li> <li>12. Support Leg</li> </ol>			

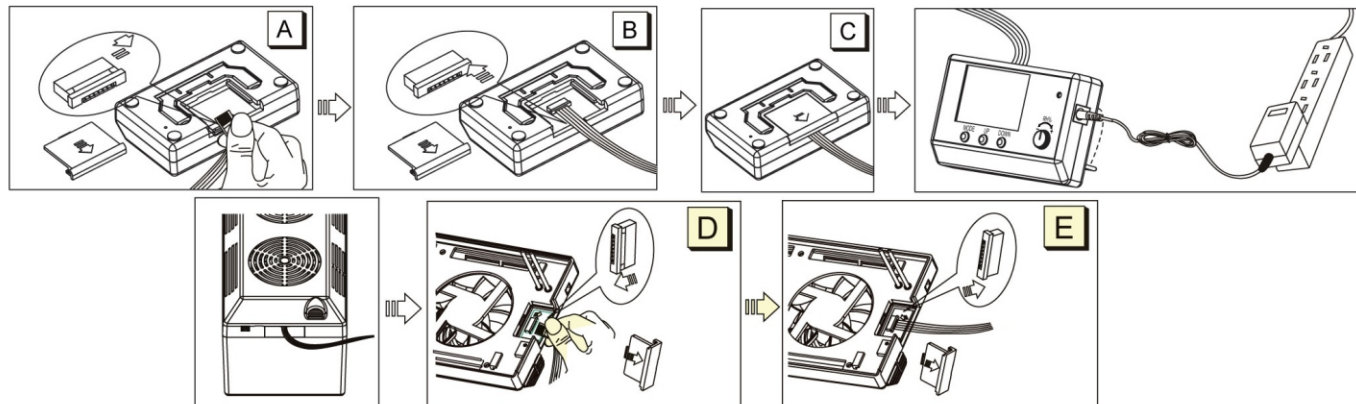
### Connection Information

\*\*\* The Flat Cable that connects the Main Controller to the Water Tank is attached at the factory. This cable is fragile and may tear easily. In regards to this, we do not recommend disconnecting and reconnecting often. However, if the cable needs to be reconnected then follow these instructions carefully in order to avoid damaging it. \*\*\*

To connect the cable to the Main Controller unit, follow these instructions:

(When following these instructions, be sure to plug the cable head into the venter of the cable socket.)

- A. Open the back cover on the Main Controller unit and pull the cable lock out to plug in the Flat Cable head. Making sure the blue on the flat cable is facing upward. Also make sure the flat cable is plugged into center.
- B. Push the cable lock in to secure the Flat Cable head.
- C. Replace the back cover.
- D. Open the back cover on fan part and pull the cable lock out to plug in the Flat Cable head. Making sure the blue on the flat cable is facing upward. Also make sure the flat cable is plugged into center.
- E. Push the cable lock in to secure the Flat Cable head. Replace the back cover.



## Controller Instructions

- A. Press and hold the 'MODE' button for 3 seconds on the digital hygrometer then release. The RH Setting numbers will begin to blink on the display. Press the UP key to raise the humidity and DOWN to lower it.
- B. The fan will draw off moisture from the tank and into the humidor automatically when the humidity is lower than 1% of the RH setting.  
Example: The RH setting is 70% but the actual humidity is 69%. The fan will activate, then stop when the humidity level is higher than the RH setting by 1% (71%).
- C. Quickly Press MODE to switch the display from °C or °F.
- D. Press the Up or Down Key to display the Max/Min humidity.
- E. When the water level is low, the LCD display will show 1 water point, and it will beep for 30 seconds. This means you will need to refill the water to the water line (Overfilling the water tank may cause ventilation issues and may short circuits). Pressing any button will turn off the alarm.

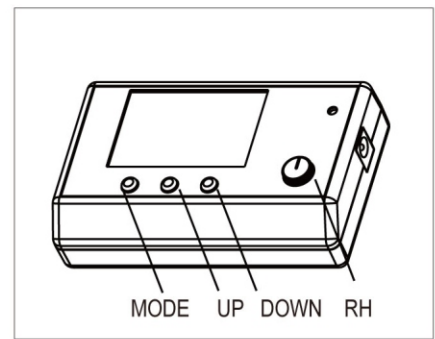
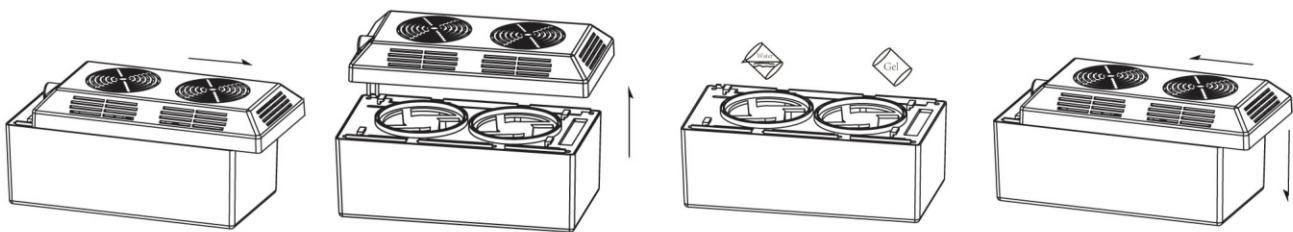


FIG 1

## Water Tank Setup



- Pour in the bag of dry gel into the water tank.
- Add distilled or carbon filtered drink water into the water tank, filling to the water line. Overfilling the water tank may cause ventilation issues and short circuits
- Wipe off any excess water on the inside and outside of the fan unit.
- Place the cover back on the water tank as shown above. Allow 20 minutes for the gel to absorb water before use. Replace gel yearly.

Each humidifier's hygrometer is factory calibrated to be at 70%, but if you believe that your hygrometer is incorrect, the DCH-56 allows you to manually adjust and re-calibrate its hygrometer using the steps below. After adjusting, place the humidifier back into the humidor and allow 24 hours for accuracy.

- Digital RH adjuster (shown on picture FIG 1)
- Always adjust the digital RH adjuster first.
- To re-calibrate turn the RH% knob clockwise, with each click it will add ~1%, Counter clockwise will adjust by ~(-1)%.
- You can re-calibrate up to +/- 4%. After adjusting place the humidifier back into the humidor and allow 24 hours for accuracy.

## Attention

1. Avoid having water near any electric connection. Make sure the power plug is dry before plugging it into any power outlet.
2. Please do not use tap water in humidifier units. Tap water will cause damage to humidifiers, humidors and cigars.
3. Make sure there is gel in the tank. If you would like to use without gel, don't use distilled water because the water sensor will not detect water since distilled water is too pure, instead use carbonated filtered drinking water.
4. You will need to check flat cable connection if needed. Unplug and re-plug both ends of cable back in, making sure the blue on the flat cable is facing upward. Also make sure the flat cable is plugged into center.
5. If lime build up is seen on the two water sensor poles, clean with de-limer or vinegar. Make sure no liquid gets into the humidifier.

Factory Pre-set	Humidifier Accuracy	Temperature Range	Manually Adjust Range	Measures Humidity Reading
70%	± 1%	0–99°C	40%–90%	40%–90%, ± 3%
Size	Operating Current/Fan	Wall Outlet Power	Humidifier Power Import	
9"L × 4 3/4"W × 4 1/2"H	600mA	100–240V AC	12V/DC	

Engineered in the United States  
Manufactured in China  
Patent rights issued and /or pending

Diseñado en Estados Unidos  
Fabricado en China  
Derechos de patente expedidos y/o pendientes

ConCu aux Etats-Unis  
Fabriqué en Chine  
Brevets déposés/ou en cours